

# **Regarding the distressing situation for Morgan the wild-born orca, held at the entertainment park *Loro Parque***

Presentation to Amsterdam Court, 1 November 2012

© Dr Ingrid N. Visser

- *Compiled from data collected by the author on 21-23 Oct 2012, at Loro Parque, Tenerife, Spain*
- *Additional notes (presented verbally to the Judges, or to clarify images) are given here in blue.*

# COMMERCIAL USE

*Poster specifically  
about Morgan,  
in a tourist ticket kiosk*

**Tenerife, Canary Islands**

*Additionally, paid advertisements  
in airline magazines, include  
references to Morgan*



Morgan's EU CITES Transport permit (to move her to *Loro Parque*)  
is EXCLUSIVELY for 'research',  
therefore commercial use is in violation of the permit



Paying clients watch Morgan in a show at *Loro Parque*



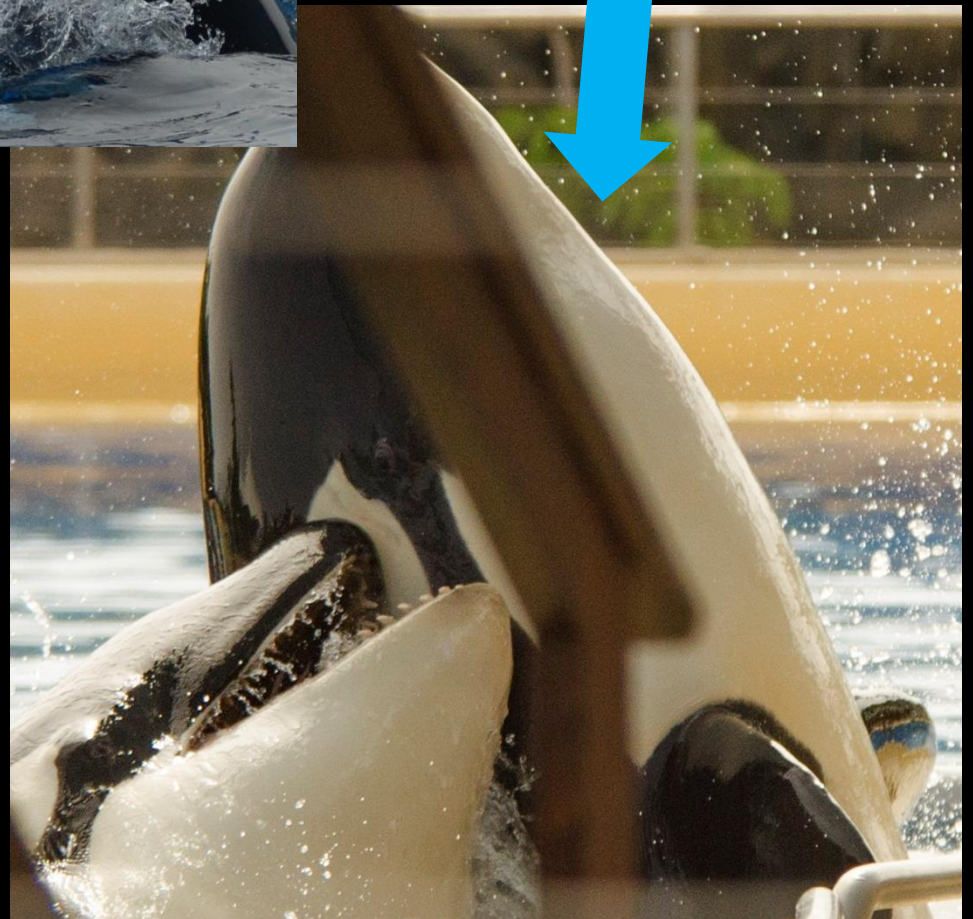




Morgan



Visser (2012) report to the  
Amsterdam Court  
included evidence of  
bullying and attacks on  
Morgan, at *Loro Parque*



# AGGRESSION continues

During the October 2012 visit, aggression was documented again

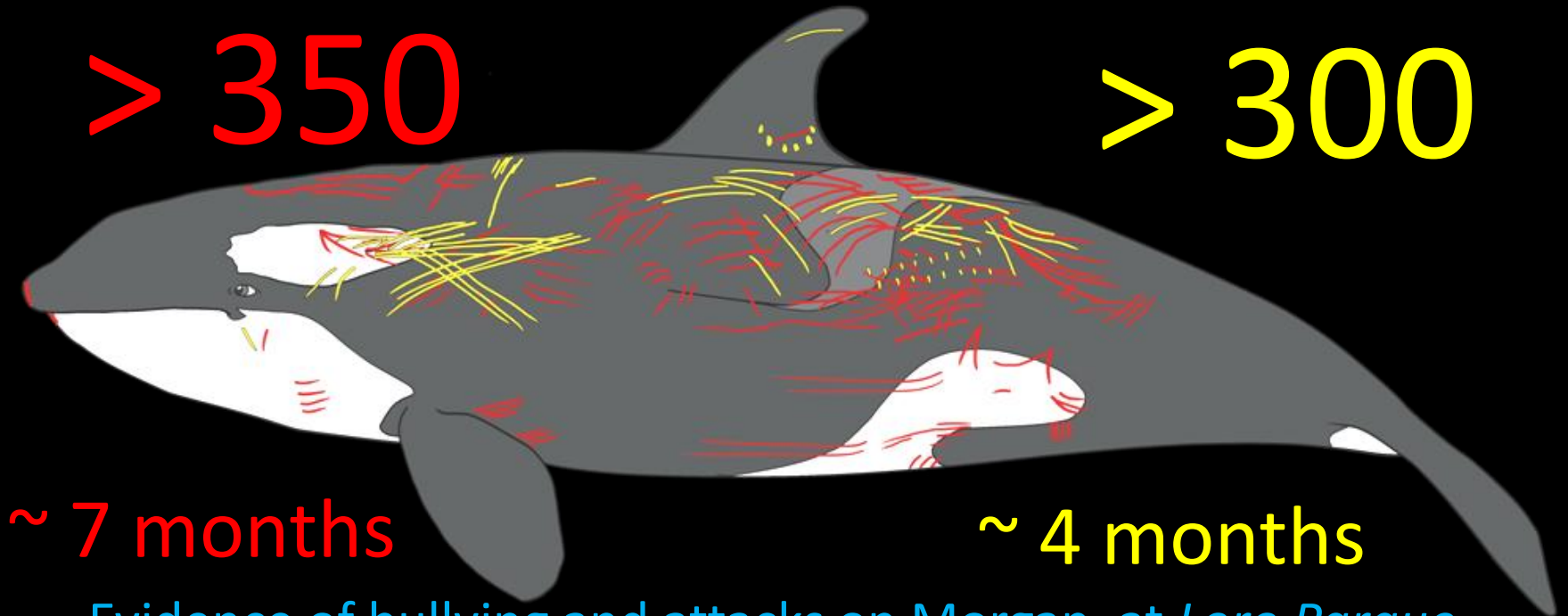


Morgan

# NEW RAKE MARKS

> 350

> 300



~ 7 months

~ 4 months

Evidence of bullying and attacks on Morgan, at *Loro Parque*.

Numbers are 'total minimum body count' (only Morgan's left side shown here). Red are from Visser (2012) report to Amsterdam Court & were accumulated between Morgan's arrival at *Loro Parque* (30 November 2011) and June 2012. Yellow were accumulated between June & October 2012. Numbers (over time) indicate that the aggression is escalating.





**Morgan attempting to flee from a ramming**

Trainers apparently do not know how to interpret aggression. They appear to view this as 'play', as they express smiles when it occurs.



# TRAINER NEGLECT

Trainers deliberately ignore Morgan, as she attempts to attract their attention via audible calls and posturing.



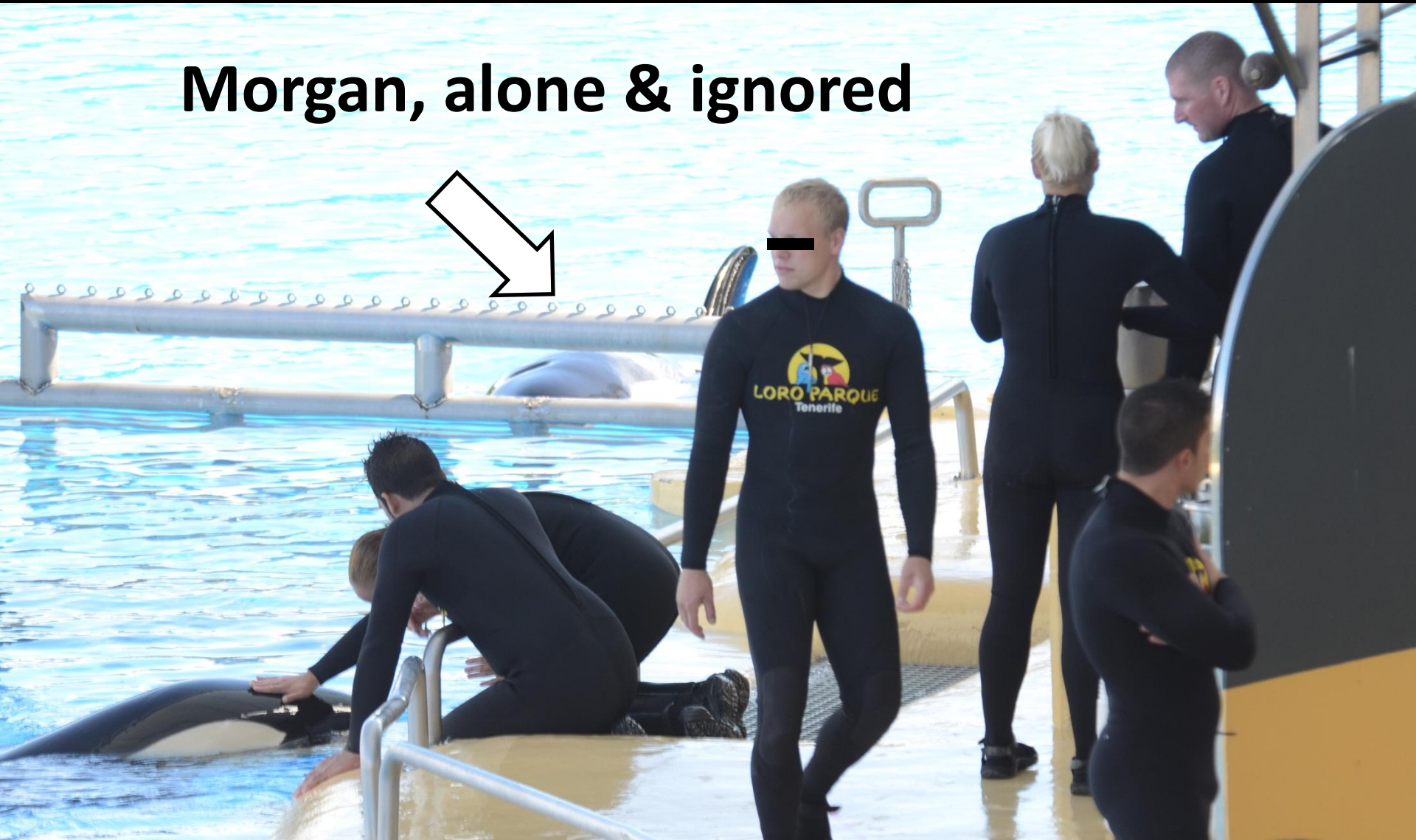


They ignore Morgan, as individuals and when in groups.



2 of 6 trainers with Adan,  
0 with Morgan

**Morgan, alone & ignored**

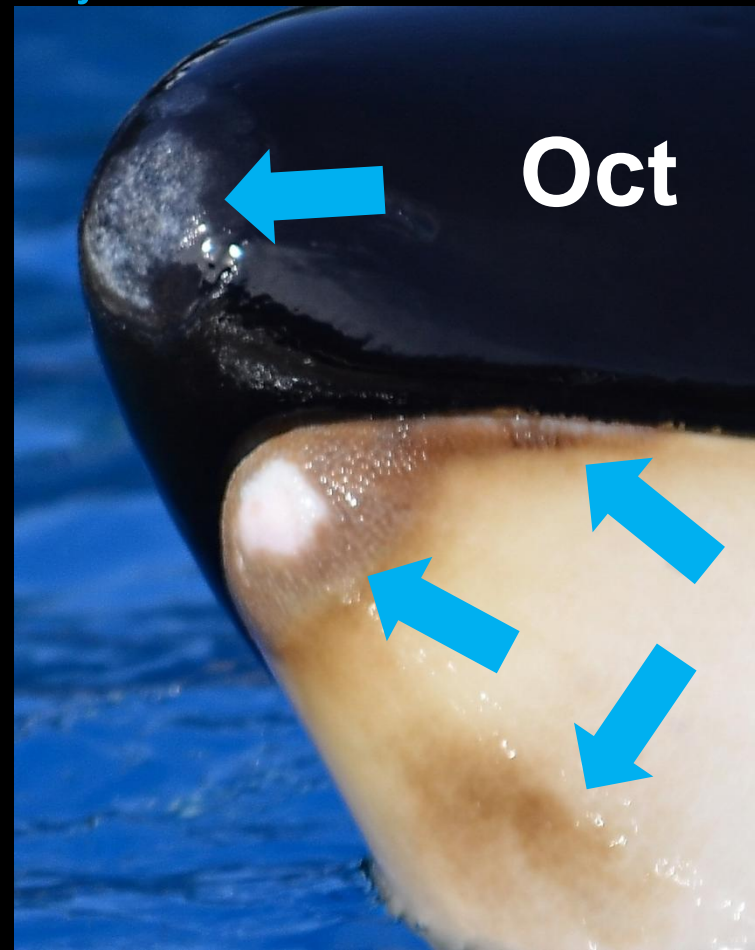




# STEREOTYPIC BEHAVIOUR

‘Abnormal, repetitive behaviour’

Results in self-inflicted damage to her rostrum (end of snout) & chin. From continually banging her head on the concrete, she has hypertrophic tissue (fibrous tissue that replaces normal tissue destroyed by injury). Note the bruising along the edge of the lower jaw and on the lower chin area.



# HEAD BASHING

This is a previously unrecorded, violent and alarming behaviour

Morgan has been documented repeatedly bashing her head against the side of the gate opening mechanism. The trainers ignore this behaviour.





# CONCRETE BITING

A manifestation of boredom & stress, this stereotypic behaviour results in tooth damage & hypertrophic tissue damage (which is painful & itchy)



31 instances  
(photographed)

in < 6 hrs observation (in October) = ~5/hour

# Morgan's tooth damage

Tooth wear (tips worn down)

10 June 2012

6 5 4 3 2 1

Pink gums

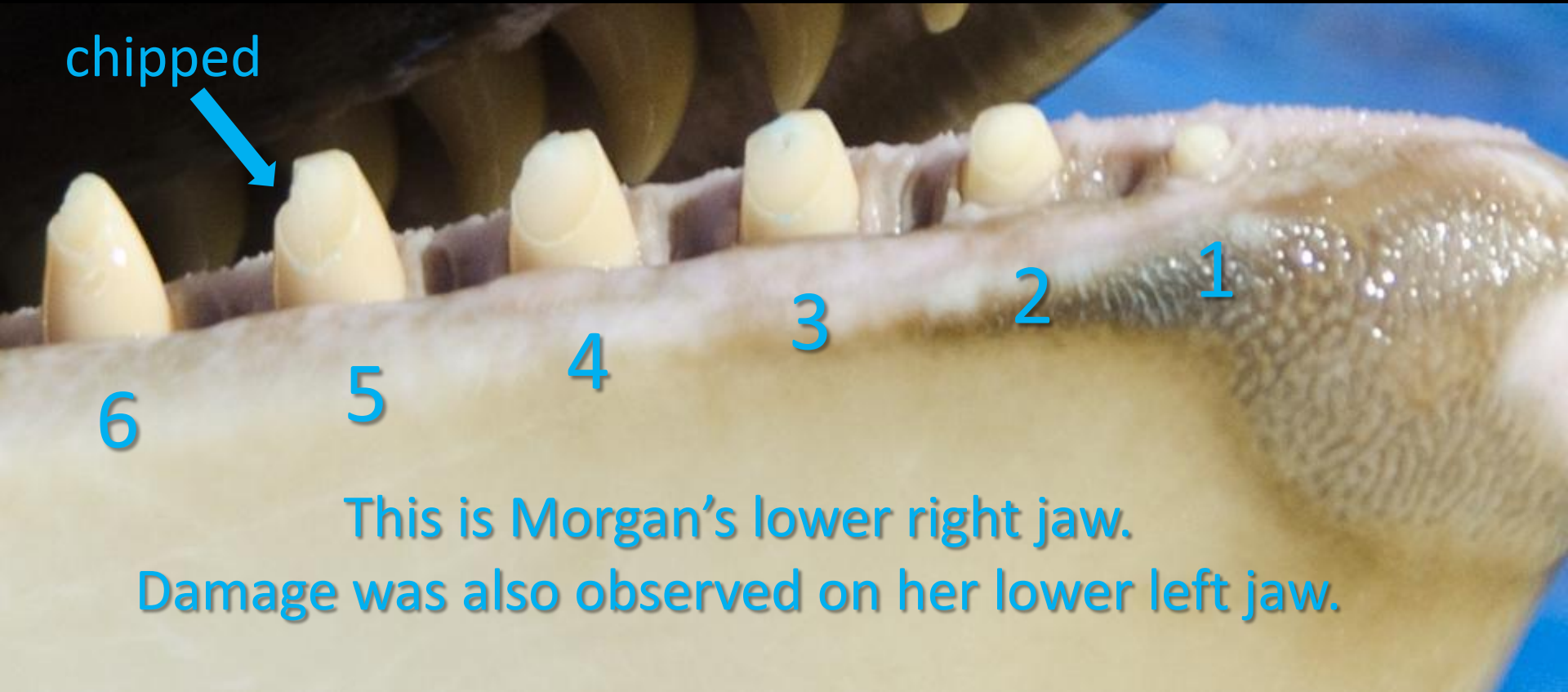


Both photographs taken from public viewing area (~ 30+ m from Morgan)



# Tooth Damage occurred in just 134 days (< 19 weeks)

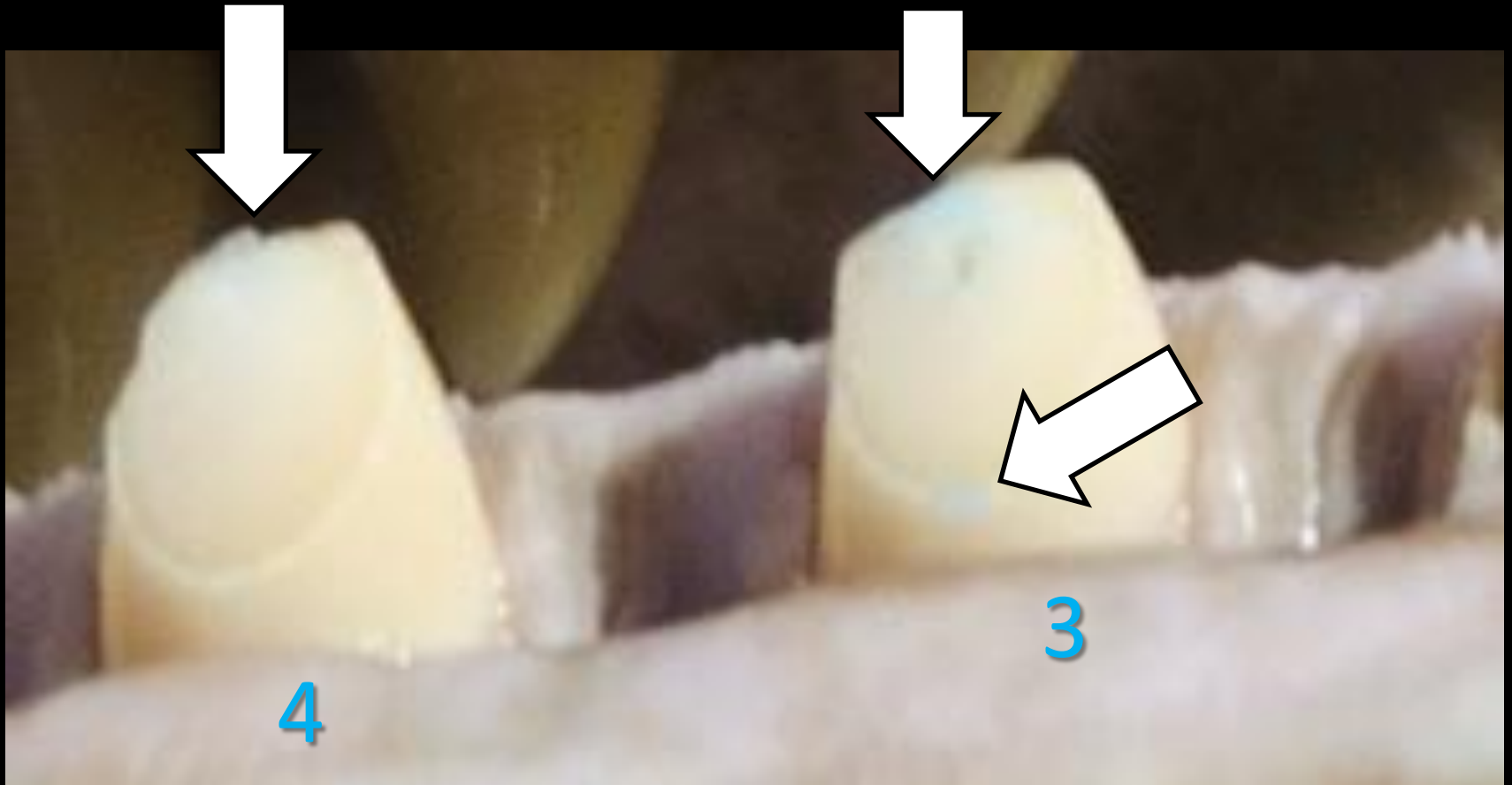
Approximately 1/3 off the top of teeth #2-5 has been worn off. Tooth #5 is chipped & may crack. Tooth #6 has begun to wear down.



This is Morgan's lower right jaw.

Damage was also observed on her lower left jaw.

# BLUE PAINT



Blue paint is only found below the water surface at *Loro Parque*. Therefore, Morgan is chewing the concrete more than has already been documented (at the surface).



Please help Morgan  
Sign her petition on the website.



Speak out against keeping Morgan in captivity and the clear  
abuse documented here.